

# What's New in Geofolia 2022v 2

## Geofolia v9.50

## Contents

<b>1. FIELDS</b> .....	<b>3</b>
1.1 New area unit columns in crop rotation and selectors .....	3
1.1.1 <i>Changes to the headings on the Crop Rotation Table columns</i> .....	3
1.1.2 <i>Changes in the General Preferences</i> .....	4
1.2 Detailed crop rotation reports.....	4
1.2.1 <i>The removal of existing fields</i> .....	5
1.3 Collective deletion of specifications .....	6
1.4 Improving the crop association stage of imports .....	6
<b>2. MAPPING</b> .....	<b>6</b>
2.1 Changes to the field "cutting" window.....	6
2.1.1 <i>Display of original fields</i> .....	6
2.1.2 <i>Display of the cutting result</i> .....	7
2.2 Amendments to the field merger .....	7
<b>3. ACTIVITIES</b> .....	<b>8</b>
3.1 Change of operation involving a change in the display of the field unit .....	8
3.2 Display of field units, rates and yields in activity input .....	8
3.2.1 <i>Display of field units and consistency rule for field additions</i> .....	8
3.2.2 <i>Display of rate units and yields</i> .....	9
3.3 Input assistance on intermediate fields.....	10
3.3.1 <i>Input from a main field</i> .....	10
3.3.2 <i>Intermediate crop input</i> .....	10
<b>4. STOCKS AND ECONOMICS</b> .....	<b>10</b>
4.1 Alert for identical invoice entries .....	10
4.2 Calculation of the value of the end of year inventory .....	10
<b>5. SMARTPHONE</b> .....	<b>11</b>
5.1 Split the Activities .....	11
5.2 Crop rotation .....	11
<b>6. DATA EXCHANGE</b> .....	<b>12</b>
6.1 Export "Fields and Activities (ZIP) .....	12
6.2 Exports "Fields and Activities (ZIP)" and "Activities (ZIP) .....	12
<b>7. PUBLISHED BY</b> .....	<b>12</b>
7.1 Update of the reports with the splitting of the Area and Unit columns.....	12
7.1.1 <i>Display of the unit column</i> .....	12
7.1.2 <i>Display of fields in the reports</i> .....	13
7.2 Insurance policy on the "Building site sheet" report.....	13
7.3 Display the PPP application rate to 3 decimal places in the worksheet .....	13
7.4 Employee Monthly Summary Report .....	13
7.5 Harvest Schedule Report .....	14
<b>8. SUPPORT</b> .....	<b>14</b>

## 1. FIELDS

### 1.1 New area unit columns in crop rotation and selectors

#### 1.1.1 Changes to the headings on the Crop Rotation Table columns

In Geofolia it is now possible to select the area unit used for each field individually. Previously, all fields had the same area unit selected at the beginning.

The area unit has a new column in the crop rotation table ( 1 ) and no longer appears in the column heading of the area columns as the unit may be different for each field:

	Field Name	Field Reference	Area	Map Area	Area Unit
<input type="checkbox"/>	Barn Field	19	5.50	5.73	Ha
<input type="checkbox"/>	Boltons Meadow	6	4.00	4.26	Ha

This new functionality was requested by some market gardeners as they work in smaller areas. The change impacts many of the "table" screens, but not the mapping or manure plan, for regulatory reasons.

The area unit can be changed in the crop rotation table and also in the "Description" and "Crop" tabs (on the crop rotation screen in "Table" or "Map" mode):

Description | Soil | Crop | History | Environment | Additional Info  
 Field Name: Barn Field  
 Field Reference: 19 | RLR Map Field No:   
 Area: 5.50 Ha   
 Map Area: 5.73 Ha  
 NVZ Region:  | Type of protection:   
 Ploughing:

The area unit selected for the field applies to the "Environment" tab and is also taken into account in the "History" tab.

The conversion of field areas is carried out using the "Equivalence" column ( 2 ) which uses the units setting (accessible via the "Unit" button of the "Settings" ribbon):

	Name	Symbol	Type	Equivalence	Reference Unit	Visible in		
<input type="checkbox"/>	Hectare	Ha	Area	10,000	m <sup>2</sup>	<input checked="" type="checkbox"/>	<input type="checkbox"/>	<input type="checkbox"/>
<input type="checkbox"/>	Are	A	Area	100	m <sup>2</sup>	<input type="checkbox"/>	<input checked="" type="checkbox"/>	<input type="checkbox"/>
<input type="checkbox"/>	Square Metre	m <sup>2</sup>	Area	1	m <sup>2</sup>	<input checked="" type="checkbox"/>	<input checked="" type="checkbox"/>	<input type="checkbox"/>

In the new version, customised field units can be defined: linear metres according to working width, for example. In this case, the "Field" box ( 3 ) must be ticked, to allow the unit to be shown in the crop rotation.

**ATTENTION :** The modification of the area unit of the land parcels is only possible at the beginning of the crop year, providing there are no Activities entered. If there are Activities, a blocking alert will be displayed when the unit is modified. The modification must then be cancelled, using the button :

Field Name	Field Reference	Area	Map Area	Area Unit	Crop 2021	Variety	Crop 2020
Barn Field	19	55,000.00	57,333.63	m <sup>2</sup>	Oats Winter	Mascani	Wheat Winter
Boltons Meadow	6	4.00	4.26	Warning Cannot change the area unit because some activities were already recorded for the field.			
CSS	94	0.35	0.35				
Fair Oak	20	12.00	12.45	Ha	Oats Winter	Mascani	Wheat Winter

**IMPORTANT :** When displaying the crop rotation with grouping (e.g. on crop), the areas are displayed in the unit of the fields if they have the same unit in the group (5). If not, the total is displayed in the unit of the farm (usually hectares, 6):

Field Name	Field Reference	Area	Map Area	Area Unit	Crop 2022
Oilseed Rape Winter (3)		24.50	25.31	Ha	
Barn Field		55,000.00	57,333.63	m <sup>2</sup>	Oilseed Rape Winter
Fair Oak		12.00	12.45	Ha	Oilseed Rape Winter
Upper East		7.00	7.13	Ha	Oilseed Rape Winter
Barley Spring (2)		17.00	17.38	Ha	
Flat Field		10.00	10.30	Ha	Barley Spring
Trickles		7.00	7.08	Ha	Barley Spring

**NOTE :** The area unit of each field is retained at the start of the next crop year (creation of a crop rotation) if the box "Also retrieve the crops of year N-1" is ticked. If the box is not ticked, the area unit defaults to the original unit used when setting up Geofolia.

### 1.1.2 Changes in the General Preferences

With the changes to the field units, a change has also been made in the "general preferences" to ensure the accuracy of the new controls in relation to this functionality.

Looking forwards, the units of the domain, defined in the "Farm Layout" section, and the "Unit by type of field", a sub-section of the general preferences (accessible via the "Preferences" button of most of the ribbons or "General" ribbons of the "Options" ribbon), are only the area units originating from the Geofolia database and ticked "visible in Fields" on the "Settings" / "Unit" screen (3 above).

**Note:** The definition of the units by type of field is only accessible in "Administrator" mode, to be activated from the "Options" ribbon by the "Mode" / "Administrator" button and to be deactivated just after by the "Mode" / "User" button.

If a custom unit has previously been defined as a general preference, it has been replaced by the reference unit "ha". The user can change this unit to another reference unit (e.g. m<sup>2</sup>).

## 1.2 Detailed crop rotation reports

The reports accessible from the "Crop rotation" ribbon via the "Reports" / "Crop rotation" / "Fields List" button contain many technical elements (planting and harvesting dates, target and actual yields, etc.).

Three new reports are available in the same menu which provide a summary of the field which is more focused on crop rotation:

- o Detailed crop rotation by crop,
- o Detailed crop rotation by sector,
- o Detailed fields list.

In these 3 reports, dates and yields have been removed and other information has been added:

- o The previous (7), i.e. the main crop of the previous season,

- The previous intermediate or secondary crop ( 8 ), i.e. the crop of the current season (either the previous intermediate or a secondary) that has the earliest end date closest to the start date of the current crop (main, secondary or previous intermediate crop),
- The next intermediate or secondary crop ( 9 ), i.e. the crop in the current season (either the next intermediate or a secondary) that has the earliest start date closest to the last harvest date of the main crop,
- The next (main) crop ( 10 ), i.e. the next crop entered in the current crop rotation.

**DETAILED CROP ROTATION BY CROP - 2022**

Home Fam

7

8

9

Secto	Field name	Area	PSA Manure	PSA Slurry	PSA Other	Unit	Variety	Previous	Intermediate or secondary before	Intermediate or secondary after	N
<b>Barley Spring</b>											
	Flat Field	M	10.00	10.00	10.00	10.00	ha	Wheat Winter			
								Comment :	TQ1234 1240		
	Mount	M	4.00	4.00	4.00	4.00	ha	Barley Spring			
								Comment :	TQ1234 1245		
	Trickles	M	7.00	7.00	7.00	6.82	ha	Wheat Winter			
								Comment :	TQ1234 1251		
	<b>Total Barley Spring</b>	<b>M</b>	<b>21.00</b>	<b>21.00</b>	<b>21.00</b>	<b>20.82</b>	<b>Ha</b>				
<b>Oilseed Rape Winter</b>											
	Fair Oak	M	12.00	12.00	12.00	12.00	ha	Oats Winter			
								Comment :	TQ1234 1239		
	Lower East	M	5.12	5.12	5.12	5.12	ha	Oats Winter			
								Comment :	TQ1234 1243 TQ1234 1244		
	<b>Total Oilseed Rape Winter</b>	<b>M</b>	<b>17.12</b>	<b>17.12</b>	<b>17.12</b>	<b>17.12</b>	<b>Ha</b>				

**1.2.1 The removal of existing fields**

In crop rotation creation unused fields can be deleted in the destination crop year. When creating a crop rotation, if fields exist, Geofolia proposes to delete them before generating the crop rotation:

**New Crop Rotation**

11 Create the crop rotation for the crop year 2023 ▾

from the crop rotation 2022 ▾

Also retrieve the crops from 2022

from sectors of 2022 ▾

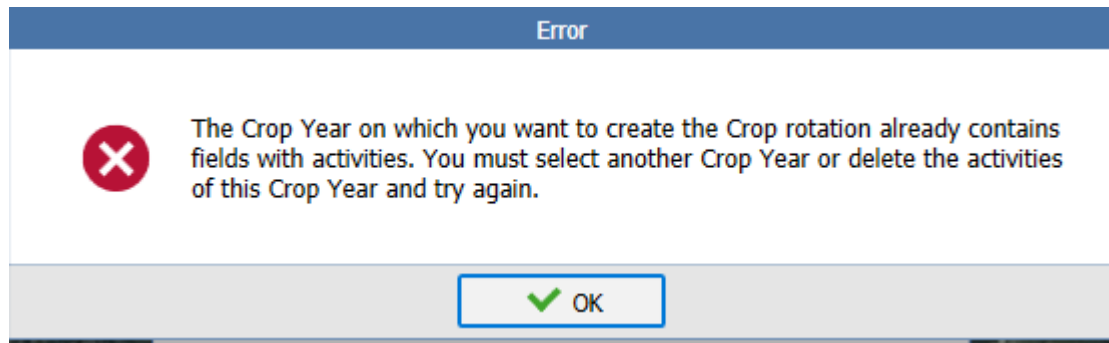
*The sectors recovery does not preserve the crop history (*

Define 2023 as current crop year

Number of fields to create: 3

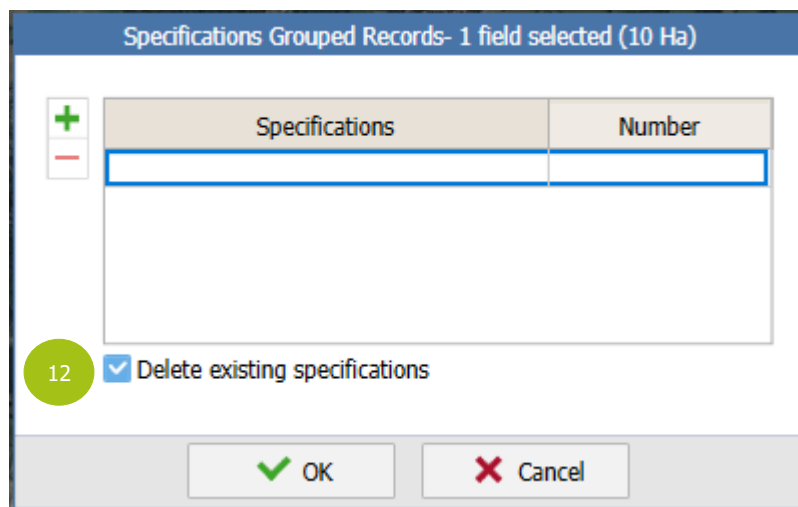
✔ OK
✘ Cancel

**Note:** If the destination crop year already contains Activities, the automatic deletion of land parcels will not be possible. A warning message will appear:



### 1.3 Collective deletion of specifications

Existing specifications ( **12** ) can be deleted on a selection of fields by using the grouped records of specifications ("**Grouped records**" / "**Specifications**" button in the "**Crop rotation**" ribbon) :



### 1.4 Improving the crop association stage of imports

In all imports involving a crop association (crop rotation import, etc.), **visibility** is now taken into account when displaying crops in the association list. If a crop is not checked "Visible in the lists" in the crop settings (accessible via the "**Crop / Variety / Stage**" button on the "**Settings**" ribbon), it will not be present in the list.

If a crop already associated has been hidden (box "visible in the lists" unchecked), it will no longer be associated.

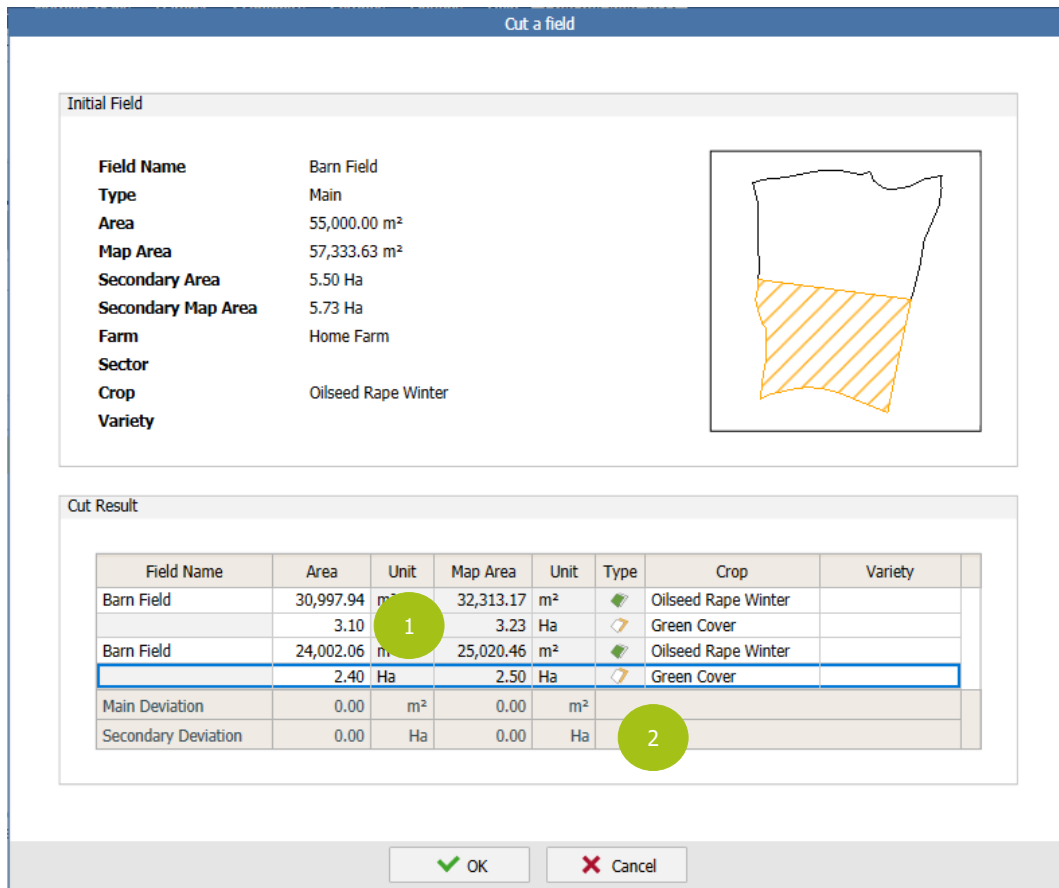
**NOTE:** Incremental input (typing in the first few letters of the desired crop) helps the assignment for crop association.

## 2. MAPPING

### 2.1 Changes to the field "cutting" window

#### 2.1.1 Display of original fields

When cutting a field, the summary window displayed at the end of the operation, shows fields (main or secondary) with different surface area units ( **1** ) :



If several sub-fields with different surface area units are cut, then the sum of the areas of the fields will be displayed in the domain unit.

### 2.1.2 Display of the cutting result

In the section "Cut Result" (2), the columns "Area" and "Unit" have been split, in order to be able to manage the display of fields (main, secondary or intermediate) for different units.

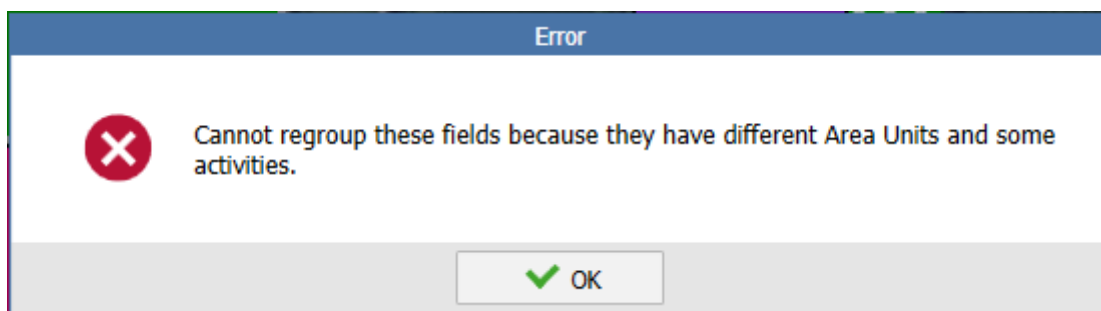
By default, the fields resulting from the cut are based on the unit of the original field unit. The unit of the field can be modified after validation of the cutting operation, in the details of each field.

The area difference totals are displayed in the field unit if it is the same, if not the same it is displayed in the farm unit.

## 2.2 Amendments to the field merger

When merging fields from different units (in "Table" or "Map" mode), the merged field takes the unit that was largest in the original field selection, in m<sup>2</sup> equivalence.

NOTE: If the selection contains fields from different units, and at least one of them contains an activity, then the merger of the fields is not possible:



### 3. ACTIVITIES

#### 3.1 Change of operation involving a change in the display of the field unit

If an activity (planned or completed) contains one or more fields whose unit is different from that of the domain, an alert is displayed when the unit of these fields is changed (1). This is important if it means a change in the display of the field unit in the activity:

Field Name	Field Reference	Area	Map Area	Area Unit	Farm	Sector	Type	Crop 2022
Lower East Margin	98	0.43	0.45	Ha	Home Farm		✓	Countryside Stewardship
Mount	12	4.00	4.42	Ha	Home Farm		✓	Barley Spring
New Grain Store	90	0.05	0.05	Ha	Home Farm		✓	
Oat Ash Row	16	42,500.00	45,880.68	m <sup>2</sup>	Home Farm		✓	Permanent Pasture
Rough Banks	85	3.46	3.46	Ha	Home Farm		✓	
Selection /Total : 1 / 27		4.25 / 128.05	4.59 / 132.11					

Date	Time (h)	Activity	Area (Ha)	Inputs	Rate / Ha	No. Fields	Status	Cost (£/Ha)
20/04/2022	000:00	Rolling	4.25			1	✓	

To ensure compliance with regulations, certain operations will be entered with the reference surface units of the Geofolia domain:

Category of operation	Units of the displayed land parcels	Other category of operation possible with the same unit
Fertilization Spreading	ha, m <sup>2</sup> (Domain unit)	Fertilization Treatment
Other Soil preparation Sowing/planting Harvest	All (Domain unit and user-created created by the user)	Other Soil preparation Sowing/planting Harvest

**NOTE:** In this version, 9.50, the check is only operated if inputs or harvested products are entered in the activity.

#### 3.2 Display of field units, rates and yields in activity input

##### 3.2.1 Display of field units and consistency rule for field additions

When entering Activities on a field and selecting the operation, the field unit is now displayed instead of the domain unit in the title of the "Cultivated Area" column title (2):

New Activity

Activity: Spraying | Date: 20/04/2022 | Start time: 00:00 | End time: 00:00 | Time (h): 000:00 | Status: ✓ | Comment: [icon]

Field | Input | Employees | Equipment | Reason | Weather | Summary | Cost

Field	Type	Crop	Variety	Type of Area	Cultivated Area (Ha)	Stage
Barn Field	✓	Oilseed Rape Winter		Total Area	5.50	

**IMPORTANT :** The unit of area remains that of the farm if there is no activity or if the category of the activity is "Fertilisation" or "Spraying". This is to allow regulatory diagnostics.

When adding a field, the area unit (3) must be the same as the first field of the activity. An activity can only contain fields with the same surface area unit (e.g. Ha, etc) :



Activity: Rolling | Date: 20/04/2022 | Start time: 00:00 | End time: 00:00 | Time (h): 000:00 | Status:

Field | Input | Employees | Equipment | Reason | Weather | Summary | Cost

Field	Type	Crop	Variety	Cultivated Area (m <sup>2</sup> )	Stage
Barn Field		Oilseed Rape Winter		55,000.00	
Wash Wood			33,685.57 m <sup>2</sup>		
Whitelands Road		Barley Spring	22,500.00 m <sup>2</sup>		

In the case of multiple field entries via the button (4); if the selected fields have different area units (5), a **warning (blocking)** message is displayed when validating the selection (6):

Name	Area	Area unit	Sector	Type	Crop
<input checked="" type="checkbox"/> Barn Field	55,000.00	m <sup>2</sup>			Oilseed Rape Winter
<input type="checkbox"/> Barn Field	5.50	Ha			Green Cover
<input checked="" type="checkbox"/> Boltons Meadow	4.00	Ha			Barley Spring
<input type="checkbox"/> CSS	0.35	Ha			Countryside Stewardship
<input checked="" type="checkbox"/> Fair Oak	12.00	Ha			Oilseed Rape Winter

**Error**

You cannot enter an activity on fields with different area units.

The selection can only be validated if it contains only fields of the same area unit.

### 3.2.2 Display of rate units and yields

On the "Input" tab (or "Harvest" if applicable), the rates and yields will be used in line with the unit of the fields selected in the activity (7):

New Activity

Activity: Direct Drilling | Date: 28/08/2022 | Start time: 00:00 | End time: 00:00 | Time (h): 000:00 | Status:

Field | Input | Employees | Equipment | Reason | Weather | Summary | Cost

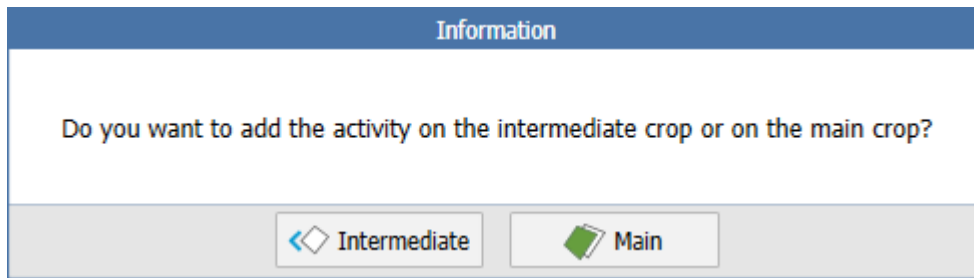
Input	Target	TGW(g)	Density (gr/m <sup>2</sup> )	Rate / m <sup>2</sup>	Quantity	Unit	Batch
Aspire				0.00	0.00	t	

**WARNING:** The unit of area remains that of the farm if there is no operation or if the category of the operation is "Fertilisation" or "Spraying", to allow regulatory diagnostics.

## 3.3 Input assistance on intermediate fields

### 3.3.1 Input from a main field

To ensure the correct crop is entered on the correct field when creating the first activity on a main field (main crop) that contains an intermediate crop, a message asks the user to choose which field the activity should be recorded:



### 3.3.2 Intermediate crop input

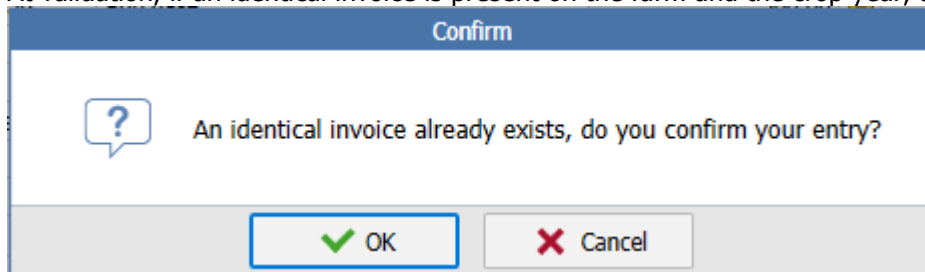
The entry of an intermediate crop is carried out by selecting the intermediate crop in the crop border (at the top of the "Crop" tab of the field details).

## 4. STOCKS AND ECONOMICS

### 4.1 Alert for identical invoice entries

In invoice entry (accessible via the "**Input invoice**" button in the "**Input**" or "**Economic**" sections), a confirmation message is added to avoid the entry of duplicate invoices. Duplicate invoices would lead to an error in the calculation of stocks and the Average Weighted Price.

At validation, if an identical invoice is present on the farm and the crop year, a message indicates this:



The check verifies the information in the table part of the invoice entry and also applies when using the "**Move to crop year**" button.


**NOTE:** *Two invoices with the same date, same supplier and same amount will be considered as identical, even if the details of the products are different. If this is correct, then by adding a letter to the second invoice number the entry can continue.*

### 4.2 Calculation of the value of the end of year inventory

The value of the final stock is now calculated on the economic preference "Cost of Inputs", which allows calculations to be based on the unit price or the average weighted price.

**WARNING:** This economic preference is defined in the "General features" / "Economic" section of the general preferences (accessible via the "**Preferences**" button of most ribbons or "**General**" of the "**Options**" ribbon).

This value will be displayed on the "Prices and stocks" screen in the "Final stock value" column and on the "Inventory report" output, in the "Ending stock value" column.

**NOTE:** If the column "Final stock value" is not visible on the table, it can be added by clicking on the button  / "**Column Settings**", at the top right of the table.

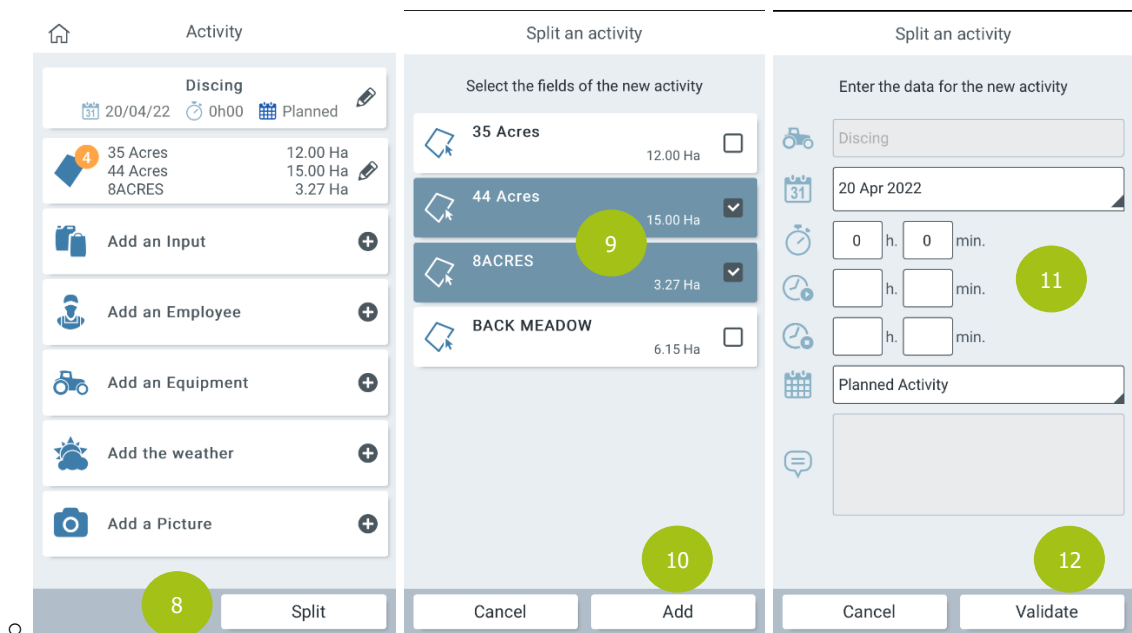
## 5. SMARTPHONE

### 5.1 Split the Activities

Splitting activities is now available on the smartphone. On the home page of an activity, a "Split" button is available at the bottom of the screen (8).

After clicking on this button, the fields to be split must be selected (9). Once the fields have been selected, a click on the "Add" button (10), the "Activity" data entry screen is displayed (11) and it is then possible to modify :

- The date,
- Duration,
- The start and end time,
- Status.



After validation (12), 2 Activities will be available:

- an activity with the selected fields,
- an activity with the rest of the fields.

All other data (supplies, labour, material, harvest) are copied into the new activity and can be modified after the split.

### 5.2 Crop rotation

Crop rotation is available on the Smartphone from the "Map" and "List" modes of the land parcels, for users of Hosted Geofolia. The function is not available for "Local" Geofolia installations.

From the "Create a crop rotation" button (🌾), a settings window appears to create a new crop rotation, with the same parameters as on the PC :

When clicking on "Validate" the application asks the PC to create the crop rotation. Once the crop rotation has been created, a synchronisation must be launched in order to retrieve the new crop rotation on the Smartphone.

## 6. DATA EXCHANGE

### 6.1 Export "Fields and Activities (ZIP)"

The possible harvest date of the field is now present in the exported file.

It is calculated on the basis of the Activities with plant protection products on the field, taking into account the "Pre-harvest interval" of the product.

**IMPORTANT :** This is only available for the export of data, not the import.

### 6.2 Exports "Fields and Activities (ZIP)" and "Activities (ZIP)"

In these two exports, information on the "Pre-harvest interval" (PHI) of the plant protection product has been added in the details per field and per activity.

For a plant protection product, this "Pre-harvest interval" (PHI) is determined on the basis of its use in the activity, i.e. on the basis of the field's crop, the target and the type of treatment of the product in the activity.

**IMPORTANT :** This is only available for the export of data, not the import.

## 7. PUBLISHED BY

### 7.1 Update of the reports with the splitting of the Area and Unit columns

#### 7.1.1 Display of the unit column

With the changes to the entry of the unit to the field in the crop rotation, the reports have also been updated to dis-associate the unit column from that of the areas (1) :

#### ACTIVITIES BY DATE - 2022

Amounts in €

16/04/2022 - From 09:00 to 10:00 - Spraying - 10.00 Ha - Completed

1

Activity

Field - Sector No.	Crop	Total Area	Cult. Area	Unit	Input	Rate	Quantity
Flat Field	Barley Spring	10.00	10.00	Ha	Beret Gold	2.00	20.00 L

Equipment: Sands Vision 4.0 (1h00 - 500 €)

Reason: Pesticide plan

The changed reports are :

- Activities by date and Activities by date with costs,
- Field Activities with cost (landscape),
- Harvest balance sheet per field per product harvested and per customer delivered,
- Technical itinerary
- Traceability sheet and Traceability sheet for certification,
- Worksheet.

#### 7.1.2 Display of fields in the reports

In the reports, as in the input, the Activities with operations of type "Tillage", "Sowing/planting", "Harvesting" or "Other" are expressed according to the unit of the fields.

For Activities with "Fertiliser" or "Spraying" operations, the areas are always expressed in the domain unit.

### 7.2 Insurance policy on the "Building site sheet" report

It is now possible to enter the insurance policy number (3) on Trading Partners (button "Trading Partners" on the "Company" and "Description" ribbons) :

Description Partner Types

Name/Business N. Agronomist First Name Sarah Farm Home Farm Visible in the lists

SBI Status Agronomist Registration No. Basis R/350 Insurance policy no. 123456789

**3**

This number will be included in the "Trading Partner" part (4) of the "worksheet" report :

## WORKSHEET

### APPLICATION OF PLANT PROTECTION PRODUCTS BY A CONTRACTOR

**Enterprise:** Home Farm **Crop Year:** 20

Trading Partner	Work Orders - Client Agreement
Enterprise Name: Agronomist Registration Number for PPP Applications Plant Protection Products from Service Providers: Basis R/350 Insurance policy number: 123456789	<b>Client Name:</b> Home Farm <b>Address:</b> , RH20 2 Pulborough <b>Activity Location:</b> Pulborough <b>Work to be done:</b> Spraying <b>Site Specificity:</b> test <b>Planned period for the completion of the worksite:</b> <b>Order:</b> <input type="checkbox"/> Telephone <input type="checkbox"/> Email <input type="checkbox"/> Fax <input type="checkbox"/> Contract <b>Date:</b> <span style="float: right;"><b>Client Signature:</b> <input type="checkbox"/> Agronomist Signature:</span>

**4**

### 7.3 Display the PPP application rate to 3 decimal places in the worksheet

PPP application rates are now displayed with 3 decimal places in the worksheet.

### 7.4 Employee Monthly Summary Report

A new report is available to show the work an employee has carried out (accessible by the button "**Employee**" of the ribbon "**Farm**"). This allows the details of the Activities carried out each day for each member of staff.

The Activities are displayed in chronological order with a monthly subtotal (end of activity):

#### CHRONOLOGICAL EMPLOYEE SUMMARY

Crop Year 2021

Date	Activity	Area (Ha)	Time (h)	Cost (£ / Ha)	Cost (£ / h)	Cost (£)
<b>Edward</b>						
24/08/2020	Discing	28.00	9h30			
Sub-Total august 2020		28.00	9h30			
05/09/2020	Fertiliser spreading	28.00	3h40			
Sub-Total september 2020		28.00	3h40			
14/10/2020	Spraying	25.25	2h25			
Sub-Total october 2020		25.25	2h25			
22/04/2021	Spraying	10.00				
Sub-Total april 2021		10.00				
10/09/2021	Spraying	17.50				
Sub-Total september 2021		17.50				
Employee is not used during this period		<b>108.75</b>	<b>15h35</b>			

## 7.5 Harvest Schedule Report

This report is accessible via the "**Reports**" / "**Harvest schedule**" button of the "**Harvest**" ribbon. The possible harvest date on each field (main or secondary) can be viewed. The date is defined by the Pre-Harvest Period of the most constraining PPP product.

A planning schedule can be set up to take account of completed and/or planned Activities.

This report is multi-crop with a table break down by crop. The fields are classified in chronological order according to their possible harvest date, then in alphabetical order.

**NOTE:** *In a viticultural context, this report is called "Harvest Planning".*

### HARVEST SCHEDULE - 2021

Crop Field	Crop	Variety	Area	Sowing date	Target Yield	Most restrictive PPP	Rate / area unit	Activity date	DBH in days	Possible Harvest Date*
Oat Ash Row	Beans Dried Winter	Tundra	4.25 ha	10/10/2020		Liaison	3.000 L/Ha	28/09/2020	7	05/10/2020
Sandy West	Beans Dried Winter	Tundra	14.00 ha	10/10/2020	5.00 t	Liaison	3.000 L/Ha	28/09/2020	7	05/10/2020
Upper East	Beans Dried Winter	Tundra	7.00 ha	10/10/2020		Liaison	3.000 L/Ha	28/09/2020	7	05/10/2020
<b>Sub-Total</b>	<b>Beans Dried Winter</b>		<b>25.25 ha</b>		<b>2.77 t</b>					
Flat Field	Wheat Winter	KWS Firefly	10.00 ha	25/09/2020	10.00 t	Liaison	2.581 L/Ha	15/09/2020	7	22/09/2020
Trickles	Wheat Winter	KWS Firefly	7.00 ha	25/09/2020	10.00 t	Liaison	2.581 L/Ha	15/09/2020	7	22/09/2020
Whitelands Middle	Wheat Winter	KWS Firefly	2.00 ha	24/09/2020	9.00 t	Liaison	2.581 L/Ha	15/09/2020	7	22/09/2020
Whitelands Road	Wheat Winter	KWS Firefly	2.25 ha	24/09/2020	9.00 t	Liaison	2.581 L/Ha	15/09/2020	7	22/09/2020
<b>Sub-Total</b>	<b>Wheat Winter</b>		<b>21.25 ha</b>		<b>9.80 t</b>					

\* The Possible Harvest Date (Activity date + DBH) does not take into account the time of the activity using the PPP, please check that the time has passed.

## 8. SUPPORT

UK Geofolia support is available from 9 am to 5pm. Monday to Friday:

- By phone, at 01798 877100
- By e-mail at [geofolia@landmarksystems.co.uk](mailto:geofolia@landmarksystems.co.uk)

Cette documentation correspond à la version 9.50. Entre deux versions, des mises à jour du logiciel peuvent être opérées sans modification de la documentation. Elles sont présentées dans la documentation des nouveautés de la version sur votre espace client.